

## Radiator Grill Store

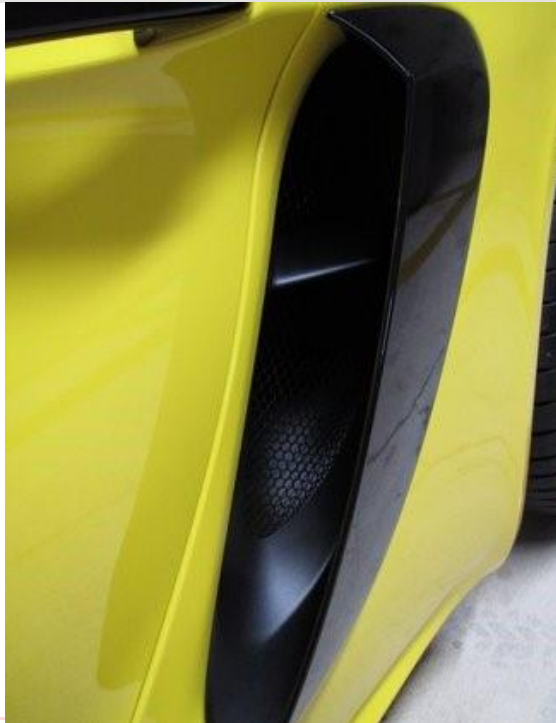
www.radiatorgrillstore.com  
Naperville, IL 60664



### 2021+ Porsche 718 GTS, Spyder GT4 Side Intake Grill Installation Procedure



*Note: it is best to protect your paint with painter's tape during the installation procedure. Though not necessary if care is taken.*

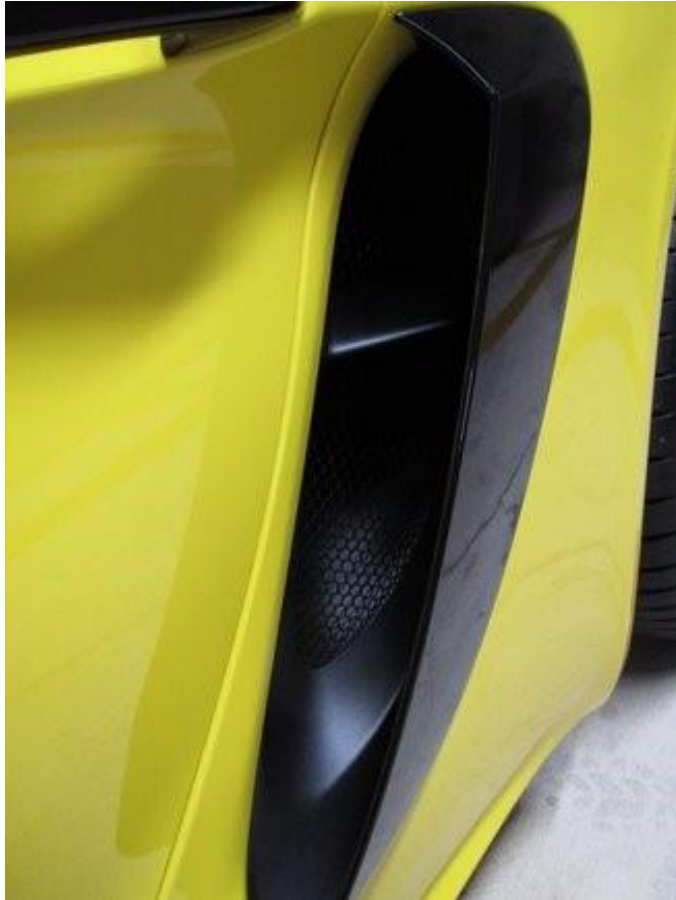


## Procedure

---

1. The 4.0 Side Intake (GTS, Spyder and GT4) can be daunting, but it isn't that bad. The GTS and Spyder allow for the side intake trim piece to be removed, grilles placed inside and replace the trim piece. Complete! Sounds simple, but the side intake trim pieces come off with high force. Also, can use painters tape around the edges to protect the paint and use plastic trim tools to pry the intake trim pieces. The GT4 is more involved but I say, more straightforward. The GT4 requires the side sill removal, the piece that houses the trim piece and scoop and runs along the lower rocker of the car.

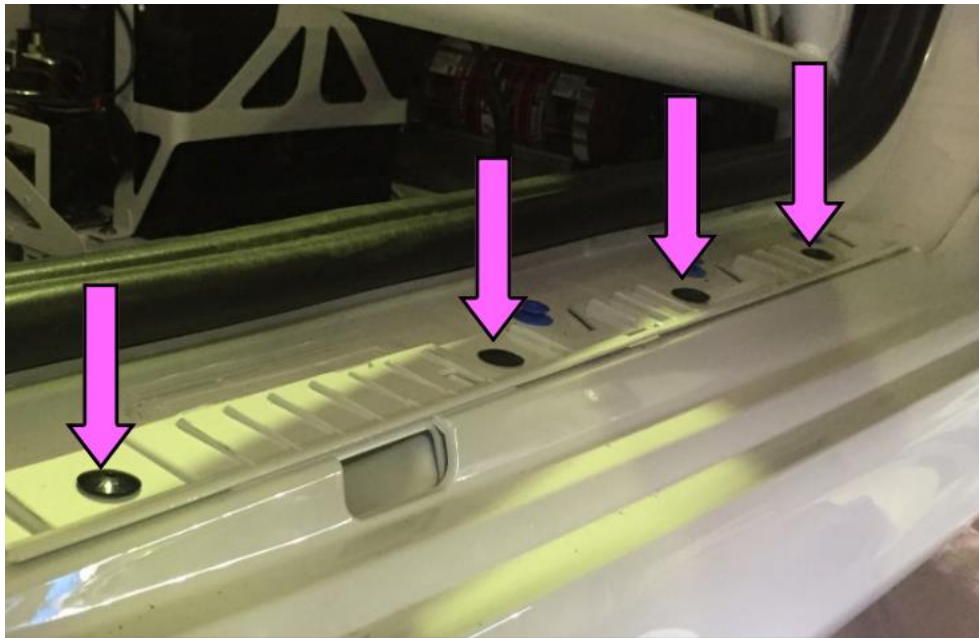
We will highlight the GT4 installation as the GTS and Spyder only require removal of the trim pieces, install the grille, then replace the trim piece.



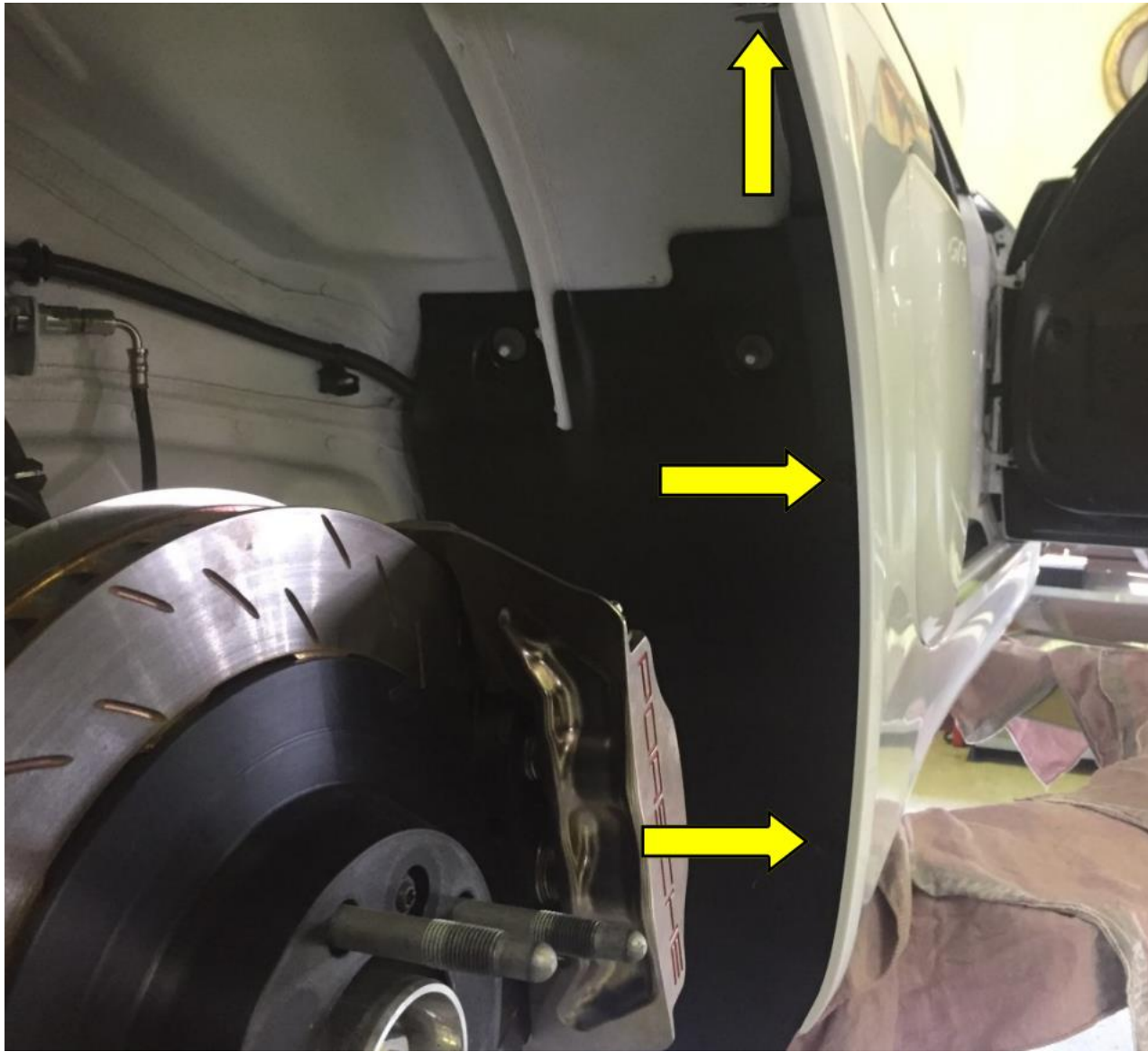
2. Remove the side sill and outer body panel that contains the scoop. This is done in multiple steps as detailed.
3. Remove the black strip with the GT4 lettering. This is held by four clips and can be simply peeled off to the side.



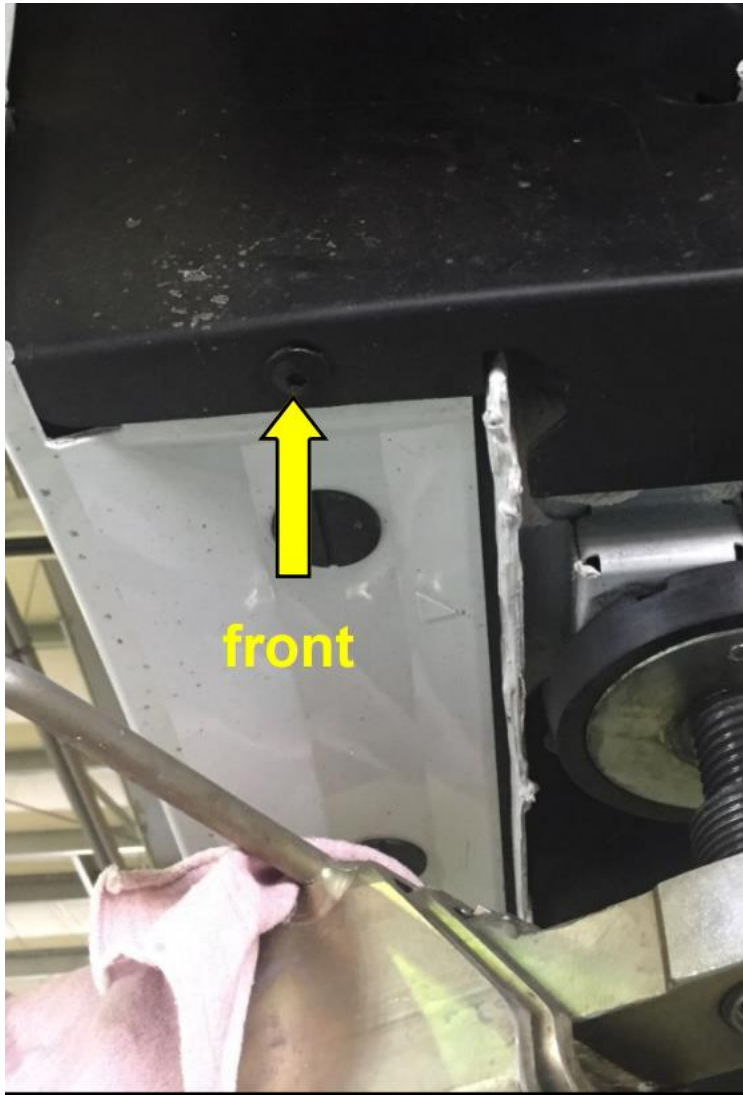
4. Remove the four black plastic spreading rivets with a suitable tool, we recommend a plastic trim removal tool.



5. Remove the three screws in the rear wheel housing. Models may vary, but you will be able to find them and remove them (As shown on a 981 GT4, mounts shall be similar).



6. The door sill is fastened to the underside of the vehicle in the front and rear area with a screw. Remove them.



7. Remove all large plastic clips at the bottom of the door sill by twisting them (90°).



8. On the areas marked red, the door sill is fixed in holding strips by means of snap-in lugs. Carefully pull the door sill out of the retaining tabs.



9. Place the appropriate grille into the cavity, slip the grille over the dividing septum. Then replace the panel in the reverse order. Complete!!